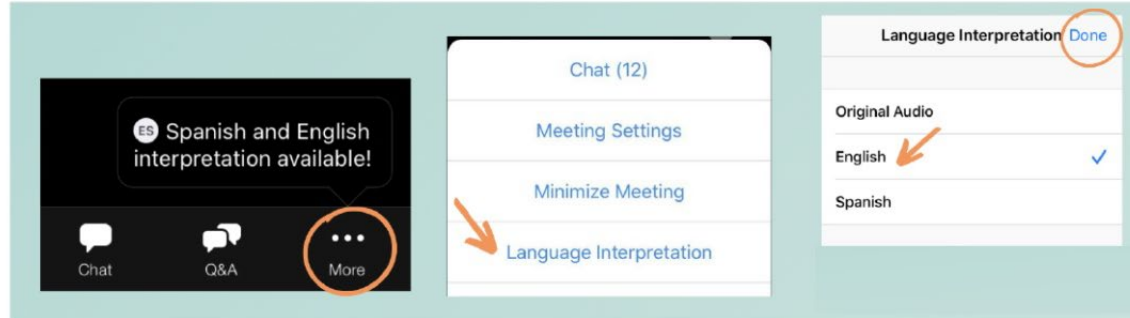
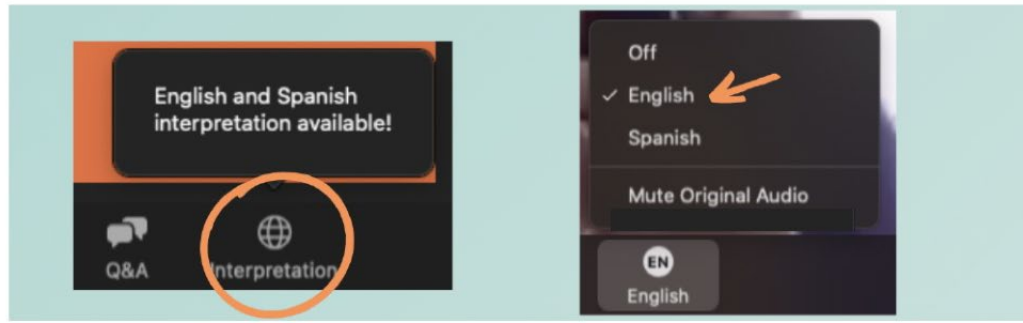


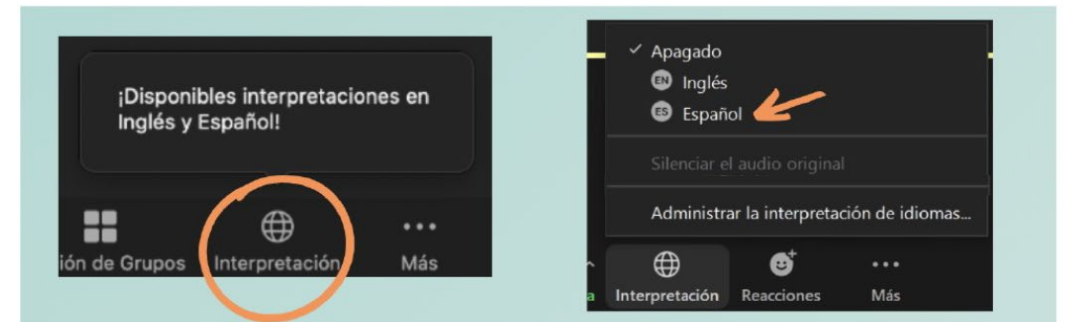
DOMESTIC VIOLENCE SEXUAL ASSAULT

May 5, 2023

LANGUAGE INTERPRETATION

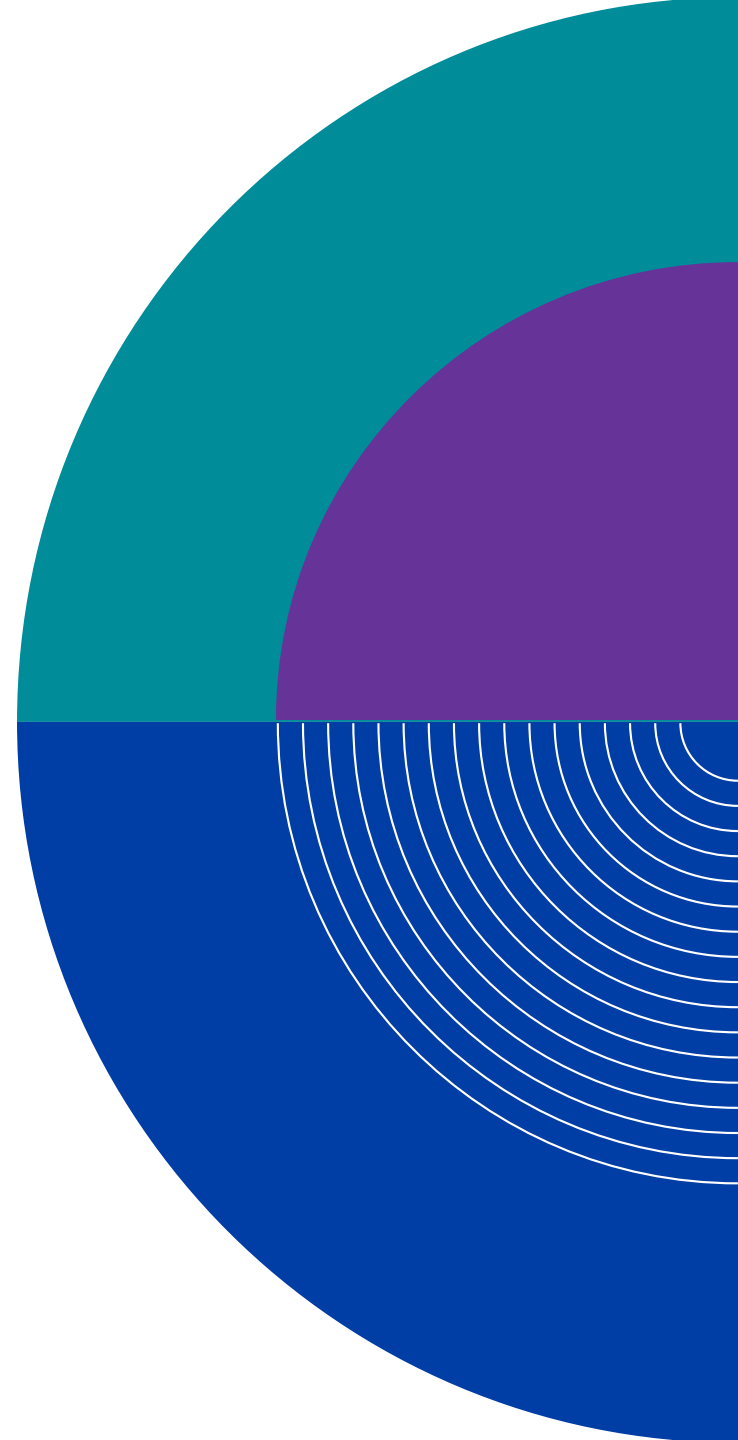


with
Zoom



WELCOME

ASL, captions, and language interpreters will be provided today.



EFFECTIVE & INCLUSIVE COMMUNICATION

- Verify that your microphone is muted when others are speaking during the meeting.
- Always speak slowly and clearly.
- Utilize the “raise hand” or chat feature for your questions and comments.
- Always take turns when speaking.



SCHEDULE

Training #1 – Housing

March 10, 2023

Training #2- Technology

April 14, 2023

Training #3 – Domestic Violence/Sexual Assault

May 5, 2023



THE ENABLE PROJECT



This training is brought to you by the Enable Project, a coalition that brings together non-profit and social justice organizations and their staff to create channels for integration of people with disabilities within their organizations and movements.



MINDFULNESS

Beyssa Buil

Chaplain/Pastoral Counselor

Society of the flora, fauna & friend



Introduction –

Creating a safe space for triggering discussions

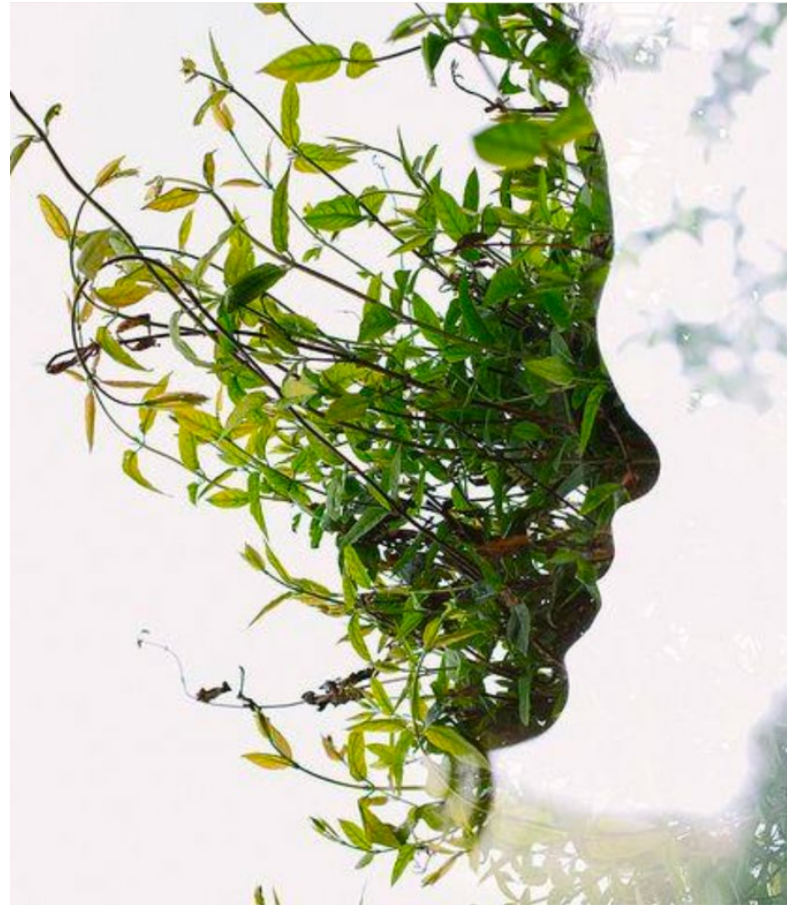
A place to be seen and heard

Website: <https://www.flora-fauna-friend.org/>

Email: communitycare@flora-fauna-friend.org

*Society of the
Flora, Fauna &
Friend*

“SACRED SPACE”



This will be a safe place.

This will be a sacred and holy place.

A place without time.

A place where we are all welcome.

Feel, seen, heard, and supported.

AGENDA

Community Conversation with the Miami Inclusion Alliance

Discussion and Questions



Did You Know?

People with Disabilities:

- Experience more severe victimization
- Experience abuse for a longer duration
- Are victims of multiple incidents
- Are victims of a larger number of perpetrators
- Have experienced abuse as a child



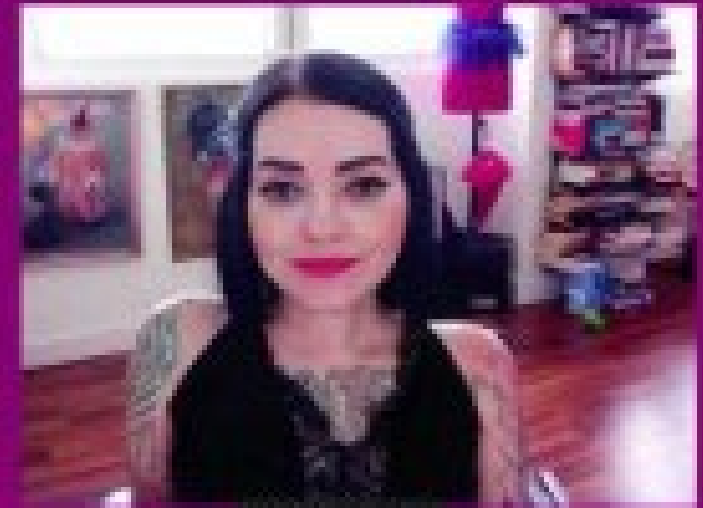
<https://youtu.be/AgQ2wgwyJos>

Statistics

People with disabilities comprise 19% of the population or 62 million people

People with disabilities are 3 times more likely to experience rape, sexual assault and violent crime

Women with developmental disabilities are at greater risk for repeated victimization



Rachel Siler

<https://youtu.be/IFgilnDovGc>

What is the MIA?



Collaboration of 4 agencies :
MUJER, CVAC, Dade Legal Aid and
Disability Independence Group
Inc.

FOCUS : To build capacity in each
organization to better serve
victims with disabilities

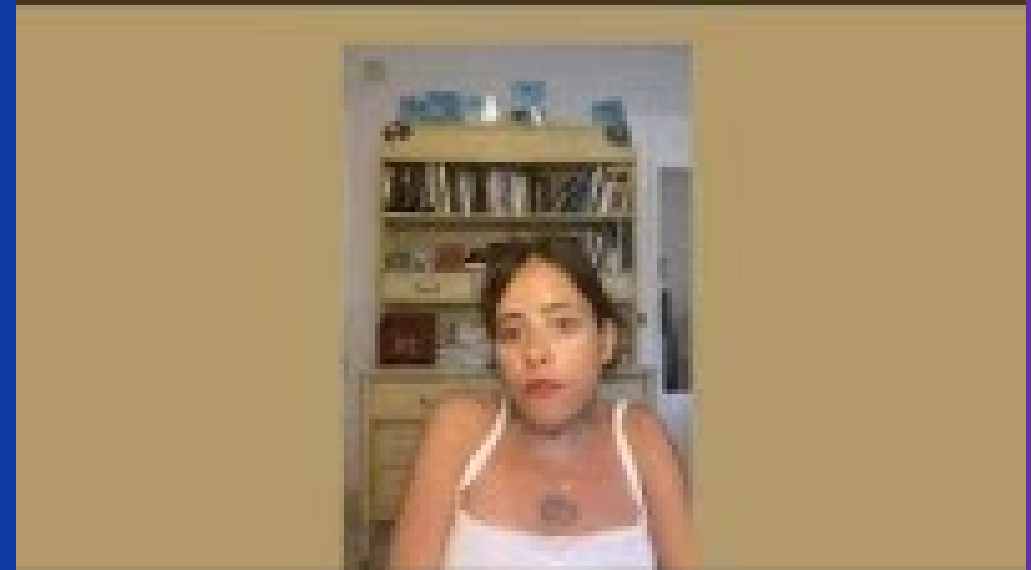


<https://youtu.be/9RjeEB1uFQc>

The Mission

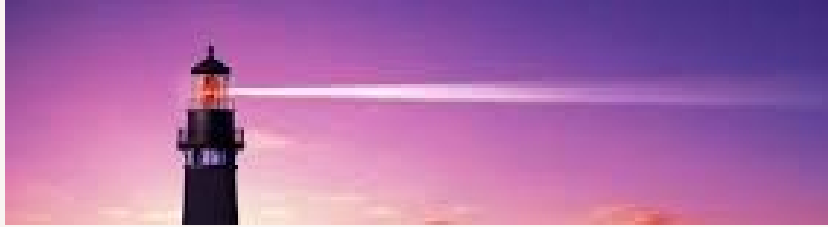
The mission of the Miami Inclusion Alliance (MIA), is to learn about the intersection of disability and domestic violence and/or sexual assault in order to promote a culture of inclusion within and between all collaborating agencies.

This Collaboration will implement the necessary changes so that persons with disabilities who are affected by domestic violence and/or sexual assault have access to services.



<https://youtu.be/UuRyNoecZkQ>

The Vision



Our vision is that every agency that serves victims/survivors is accessible, safe, and promotes dignity and respect.



<https://youtu.be/LOE7XZvCEpY>

Disability Independence Group

Mission: To expand opportunities for participation, education, employment and acceptance of persons with disabilities through advocacy, litigation, education, and training.



MUJER

Men & Women, United in
Justice, Education and Reform

27112 S. Dixie Highway
Naranja, FL 33032

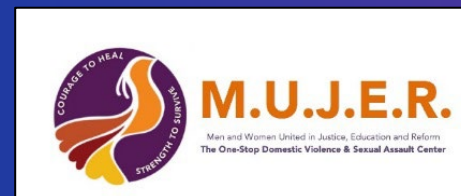
Main Office: 305/247-1388

SA Helpline: 305/763-2459

mujerfla.org



<https://youtu.be/Bjkyr-n9AQI>



MUJER

MISSION: At MUJER we provide a trusting environment that promotes emotional wellness and stability by empowering individuals through advocacy, direct response to domestic and sexual abuse, and support services that strengthen families.

- Established in 1994
- Nonprofit 501(c)(3)
- Dual Domestic and Sexual Violence Center
- 2009: Becomes A Certified Sexual Assault Center
- 2014: Exclusive 24/7 Sexual Assault/Violence Helpline



<https://youtu.be/ufQknf4HOfk>



MUJER

Additional Services at MUJER include Emergency Financial Assistance.



<https://youtu.be/Bjkyr-n9AQI>



CVAC

Miami-Dade County,
Coordinated Victims Assistance
Center

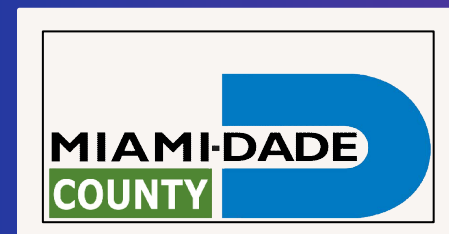
2400 South Dixie Hwy
Miami, FL 33133

(305)285-5900

www.miamidade.gov



<https://youtu.be/SbJTA01ablc>

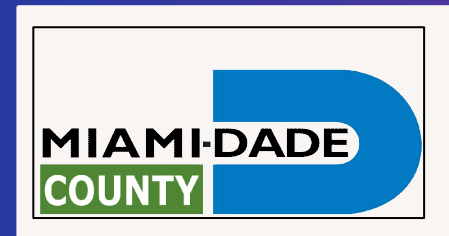


CVAC

Mission: The Coordinated Victims Assistance Center (CVAC) provides positive impact on our community through compassionate, comprehensive, coordinated services in a one-stop service center. CVAC promotes justice and provides support to people whose lives have been impacted by domestic violence and abuse.



<https://youtu.be/uh7P3k9I1LI>



Legal Aid

Mission: Dade Legal Aid provides a critical safety net of civil legal services for the neediest residents of Miami-Dade County by offering an array of services. Together with the leadership of the Dade County Bar Association, numerous affiliated voluntary bar associations, the Florida Bar, and community-based partners, we are committed to providing *“Access to Justice”* to those who need it the most.



<https://youtu.be/SwjzS6ofvMU>



Legal Aid

To Apply online:

<https://form.jotform.com/203556914859165>

Or Contact by phone or email:

Luisa Pena, Paralegal

Telephone: 305-981-6683

Email: lpna@dadelegalaid.org



Dadelegalaid.org

GUIDED BODY SCAN



Reset your nervous system and mindfulness

Reflect for one minute and observe what has come up for you it can be a physical sensation, a memory, emotion, a thought.

Overview of the Grant

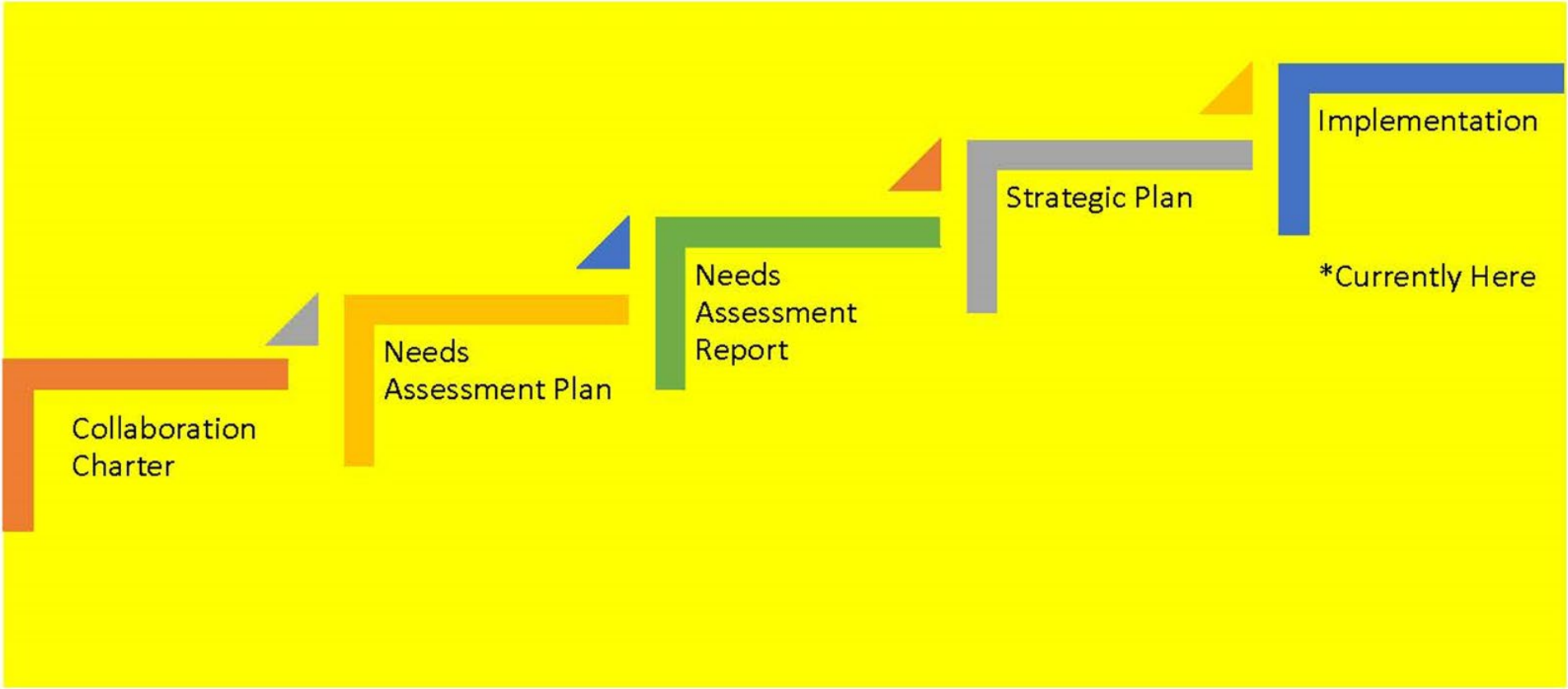


Looked at the system through the lens of victims with disabilities

Identified organizational barriers

Identified attitudes, knowledge, skills and comfort in serving victims with disabilities

Phases of Our Work



The MIA Liaison Project

Logic Model Development

In February 2020, Dr. Kesten worked closely and collaboratively with DIG to develop and refine the MIA Liaison Program Logic Model (see appendix A). A logic model is a visual representation of how the program's planned work is linked to the changes it intends to create. Developing a logic model is a critical first step in any evaluation process. The model lays the foundation for identifying and articulating the purpose and scope of the evaluation and helps evaluators better understand the nature and sequence of expected outcomes.

Data Sources

Primary data sources



Pre-Post Liaison Survey



Notes from Debrief Sessions



Focus Groups



Program Activities Output Data

Data Analysis

Program outputs and quantitative data from the pre-post survey was analyzed using basic descriptive statistics and visualized to highlight changes over time. Qualitative data from debrief notes and focus group transcripts was analyzed using a general thematic approach. A deductive coding framework was created to code and categorize data. Emergent themes were also captured and reported.

Program Timeline



March-April 2020

Liaisons...

- Have initial meeting with MIA team
- Complete program orientation and pre program survey
- Receive training on domestic violence and sexual assault



May-June 2020

Liaisons...

- Begin to attend Pre and post meeting sessions
- Begin to attend Community meetings



July – August 2020

Liaisons...

- Begin community education by presenting on Domestic Violence and Disability as part of the Enable Project webinar series
- Complete a mid-program evaluation



September-December 2020

Liaisons...

- Continue community education by participating in a training on the intersection of abuse and disability for the Domestic Violence Court and its partners
- Participate in meetings with MIA team

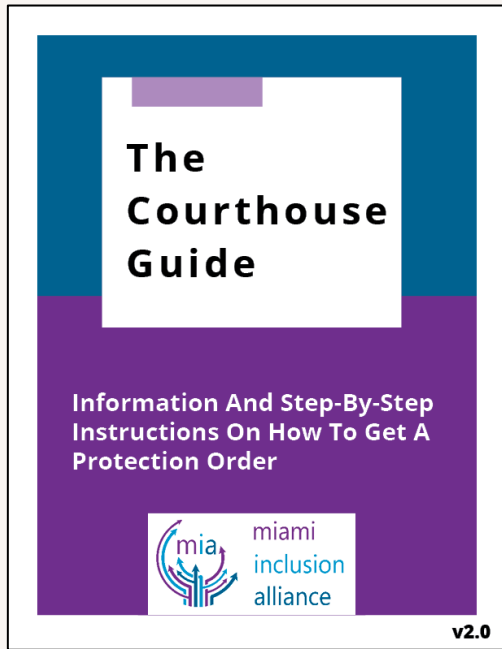


January- December 2021

Liaisons...

- Continue community education by participating in a training on the MIA Program for the South Dade Care Coalition
- Complete program evaluation and program survey

Final Projects



DISCUSSION



Disability Independence

Group

www.justdigit.org

305/669-2822

Dade Legal Aid

www.dadelegalaid.org

305/579-5733

CVAC

www.miami-dade.gov

305/285-5900

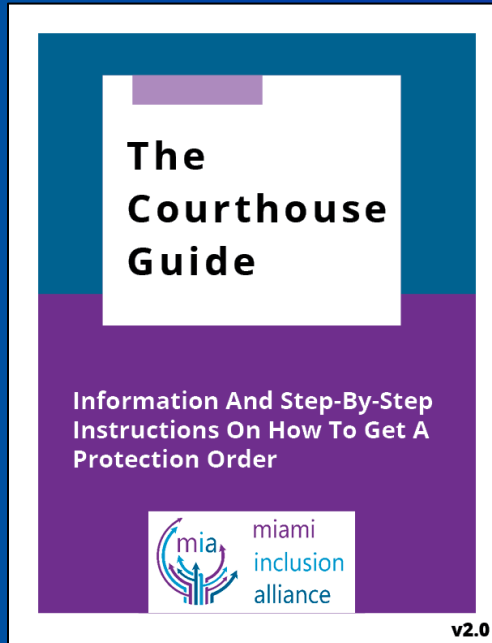
MUJER

www.mujerfla.org

Main Office: 305/247-1388

SA Helpline: 305/763-2459

The Courthouse Guide



How did we decide to make the courthouse guide?



What purpose does it serve?



How to access the courthouse guide:

1. Go to our website: www.justdigit.org
2. Click Resources Tab

The Miami Inclusion Alliance (MIA)

The Courthouse Guide v.2

- [ASL Video](#)
- [Creole](#)
- [Creole readable PDF](#)
- [English](#)
- [English readable PDF](#)
- [Spanish](#)
- [Spanish readable PDF](#)



The MIA Institute



MIA Video Library



Domestic Violence 101

Sexual Assault 101

The Legal System 101

Disability 101

The Intersection of Disability and Abuse

How to Work with a Victim/ Survivor with a Physical Disability

How to Work with a Victim/ Survivor Who is Deaf and/or Hard of Hearing

How to Work with a Victim/ Survivor with a Developmental Disability

How to Work with a Victim/ Survivor with a Visual Disability

The Usability Tool



Accessibility Feature of the I-pad



Resources

1. Go to our website: www.justdigit.org
2. Click Resources Tab



Take Aways



ENABLE PROJECT PARTNERS

- ❖ Catalyst Miami
- ❖ The Center for Independent Living of South Florida
- ❖ Disability Independence Group
- ❖ Advocacy Network on Disabilities
- ❖ Enable Project Advisors





CALENDAR OF EVENTS

[CILSF Activities: https://www.cilsf.org/calendarofevents](https://www.cilsf.org/calendarofevents)



PRESENTATION MATERIALS

<https://www.justdigit.org/resources-2/>

[YouTube Channel – Enable Project Playlist](#)

SUPPER SOCIAL CLUB

- May 16, 2023
- 6:30pm
- Cheesecake Factory, Coral Gables



THANK YOU

